



# Suvarnaban

UNPARALLELED CONNECTIVITY  
AT MODEL COLONY



MahaRERA No. P52100077493  
[maharera.mahaonline.gov.in](http://maharera.mahaonline.gov.in)





# Suvarnaban

UNPARALLELED CONNECTIVITY  
AT MODEL COLONY

Discover the epitome of luxurious living at Suvarnaban, an exclusive new residential project situated in the heart of Model Colony.. Crafted with elegance and sophistication, Suvarnaban is designed to provide an unparalleled living experience for those who seek the finest in life.

Suvarnaban stands as a testament to modern architectural brilliance. Each residence is meticulously planned to offer spacious, well-ventilated, and naturally lit interiors. The aesthetic appeal is matched by functionality, ensuring that every square foot of your home is optimized for comfort and convenience. Premium finishes, state-of-the-art fixtures, and attention to detail make Suvarnaban a true masterpiece.



Be a part of an exclusive  
community that redefines  
luxury living.



SPACIOUS  
LIVING  
AT ITS  
FINEST



Serenity



---

# SPECIFICATIONS

---

## Walls

- AAC Blocks Masonry with POP/Gypsum finishes for Internal Wall and Ceiling.
- External walls - 150 mm with Acrylic Paint (Asian Paints/Nerolac).
- Internal walls - 125 or 100 mm with Plastic Emulsion Paint (Asian Paints/Nerolac).
- Plastic emulsion for all internal walls.
- RCC Slab with POP/Gypsum finishes for Ceiling with Plastic Emulsion Paint (Asian Paints/Nerolac).

## Flooring

- Marble in Living, Dining & Kitchen.
- 800 x 800 mm Vitrified Tiles in all other rooms. (Make: Kajaria/Asian/Simpolo).

## Electrification & Power Back-up

- Concealed Electrical Piping/Wiring.
- 4 light points, 1 fan point, 2 - 5 Amp plug points in Each Rooms.
- Invertor Power backup covering 1 light point & 1 fan point in all rooms and one Light Point in Toilet.
- Cable/Wiring - (Polycab/Finolex)
- Switches - (Anchor/Legrand)
- A/C points in all rooms.
- 15 Amp boiler point in all toilets.
- Two 5 Amp & One 15 Amp in kitchen.
- 

## Windows

- UPVC windows with Marble Framing with mosquito nets and MS safety grill. (3- Track Windows wherever possible.)

## **Doors**

- Plywood Door Frames, Veneer Finish Door Shutters with Melamine polish (All internal doors 32mm Thick).
- Main door and Safety door with Veneer SS/Brass fittings & Night Latch (Main Door 35mm Thick.)
- Sliding/Folding Doors for Sit-Out.
- Black Granite/Marble Door frames for toilets.

## **Kitchen & Dry Balcony**

- Granite Kitchen platform with Full Height Dado & SS Sink with drain board.
- Combination of Anti-Skid/Vitrified tiles and granite in Dry Balcony.
- 15 Amp Point for Refrigerator & Mixer/Microwave in Kitchen, Washing Machine in Dry Balcony.

## **Bedrooms**

- Television and Telephone Point Provision in all bedrooms.
- 15 Amp Point for Air Conditioner.

## **Toilets**

- Concealed Piping in all Toilets.
- Provision for Hot water through Common Solar Heating System in all Toilets.
- 600 x 600mm dado tiles in all Toilets. (Kajaria/Simpolo/Asian)
- Single lever bath fittings in toilets. (Brand - Jaquar or equivalent)
- 15 Amp Point for Boiler/Geyser
- Exhaust fan in all toilets and kitchen.
-



Elegance







---

# COMMON AMENITIES

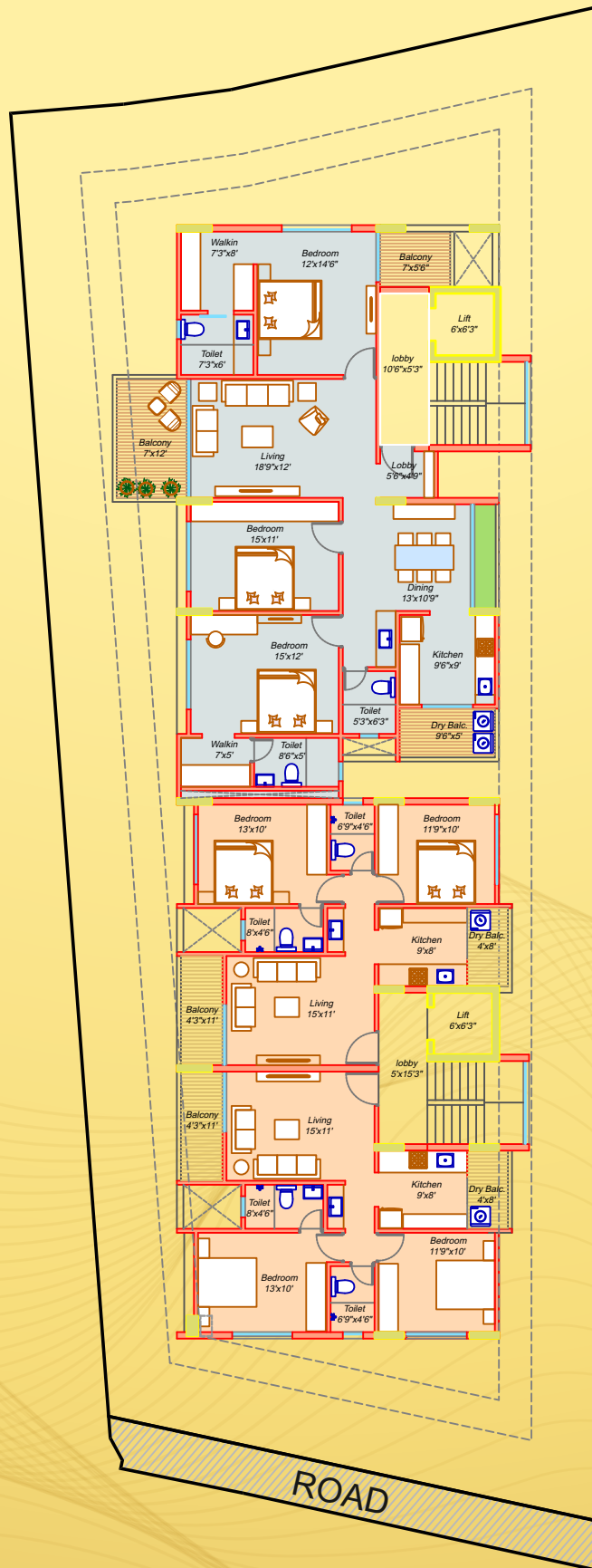
---

- 5ft wide Staircase with Marble/Granite for Treads. Risers and Landings. Decorative Steel railing.
- Secured Decorative Entrance Lobby with Ramp Access.
- Video door phone access and Intercom Facility.
- Solar Water Heater System. (for toilets only)
- 8 Passengers Auto-Door Elevator of reputed make (Kone/Omega)
- Genset Backup for Lift, Common Lighting and Water Pump (Kirloskar/Kohler/Cooper)
- Drivers Toilet in Parking.
-



Experience a spacious lifestyle  
that is so serene, yet one  
that keeps you at the forefront of  
everything happening around you  
comfortably in a secluded environment.

# FLOOR PLAN



Flat type	Rera carpet	Balcony	Terrace	Form terrace	Total Rera usable area
3BHK	1311	171	0	0	1482





**Site Address**

Suvarnaban off, Fergusson College Rd, Model Colony, Shivajinagar, Pune-16.

**Office Address**

Aditri, 501, Plot no. 4/22, Behind SBI SNTD branch, Palande courier lane, Erandwane, Pune-04.

**Call**

+91 744 744 5459

[www.trishadevelopers.in](http://www.trishadevelopers.in) | [sales@trishadevelopers.in](mailto:sales@trishadevelopers.in)



MahaRERA No. P52100077493 | [maharera.mahaonline.gov.in](http://maharera.mahaonline.gov.in)